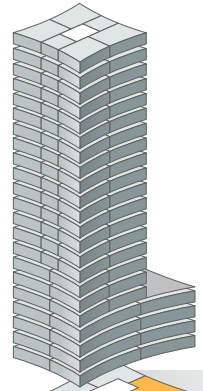




# CERES TOWER

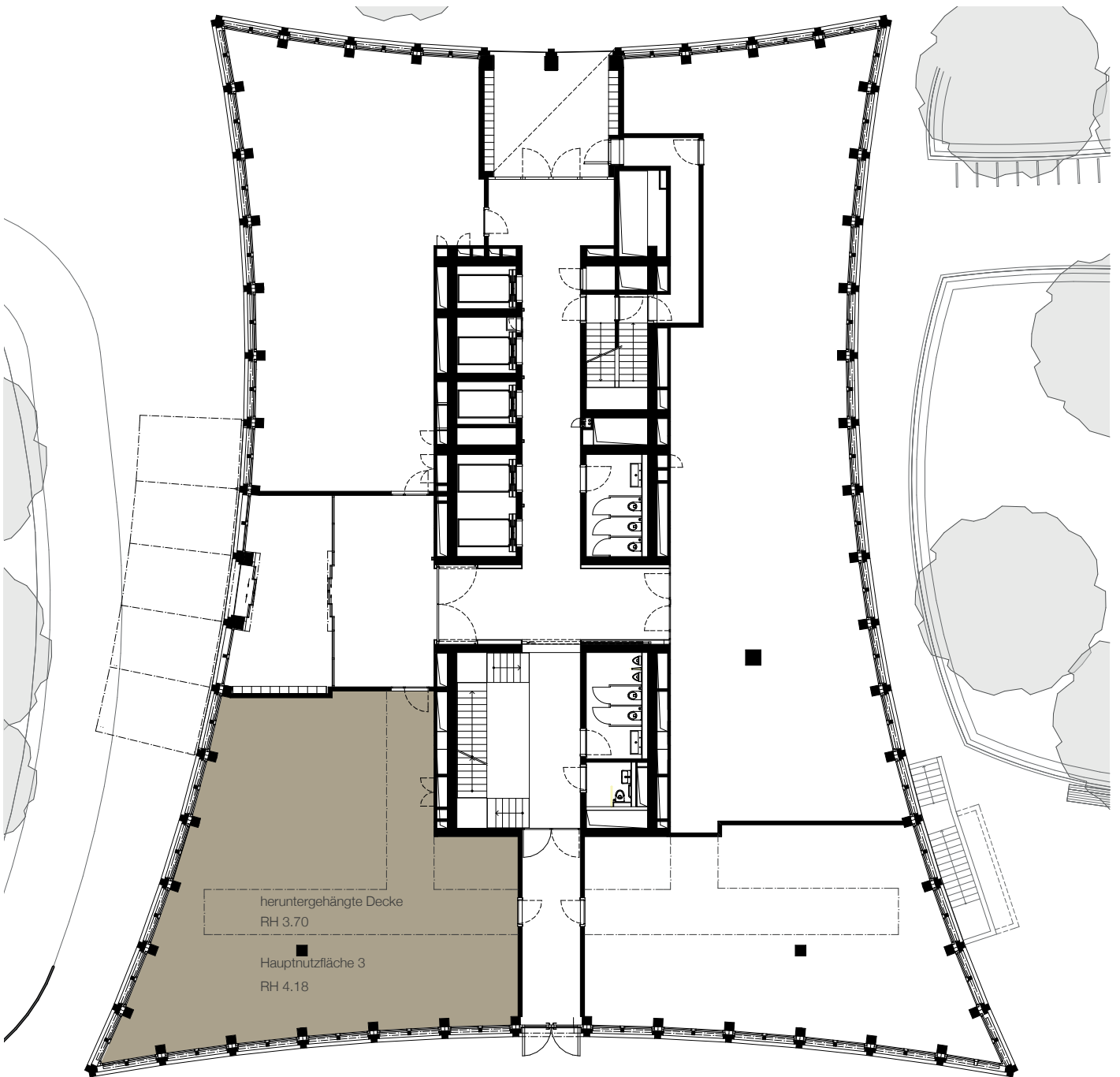


## Gewerbefläche 00.03

## Erdgeschoss

Gesamtnutzfläche

186.8m<sup>2</sup>



0 1 2 5

Vermietung: **PRIVERA** 

PRIVERA AG, Worbstrasse 142, Postfach 60, CH-3073 GÜMLINGEN  
Telefon +41 58 715 62 01, E-Mail [diana.iseli@privera.ch](mailto:diana.iseli@privera.ch)